

Gemeindevertretungswahl 2005

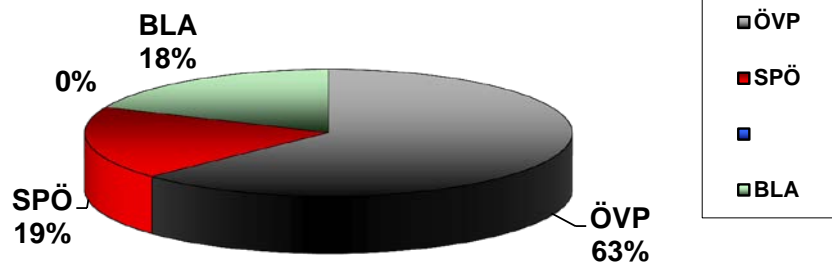
Gemeindevertretungswahl 2005

	Spr	wahlber	abgeg.	%	unglt.	%	gültig	OVP	SPO		BLA		OVP	+ -	SPO	+ -			BLA	+ -
	1	999	685	68,57%	69	10,07%	616	391	114		111		63,47%	13,88%	18,51%	-0,82%	0,00%	-15,81%	18,02%	2,75%
	2	1000	674	67,40%	44	6,53%	630	379	114		137		60,16%	8,04%	18,10%	5,00%	0,00%	-13,82%	21,75%	0,78%
	3	1228	713	58,06%	54	7,57%	659	419	150		90		63,58%	14,10%	22,76%	3,50%	0,00%	-14,76%	13,66%	-2,84%
	4	963	589	61,16%	54	9,17%	535	345	77		113		64,49%	12,39%	14,39%	-0,18%	0,00%	-15,01%	21,12%	2,80%
02.04.1995	Ges.	4190	2661	63,51%	221	8,31%	2440	1534	455	0	451		62,87%	12,08%	18,65%	2,04%	0,00%	-14,82%	18,48%	0,69%

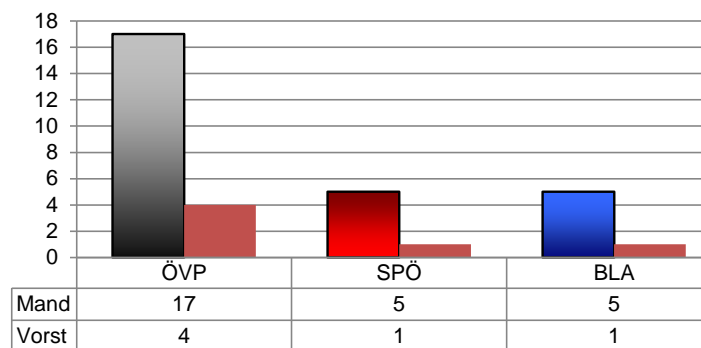
Gemeindevertretungswahl 2000

	Spr	wahlber	abgeg.	%	unglt.	%	gültig	OVP	SPO	FPO	BLA		OVP	+ -	SPO	+ -	FPO	+ -	BLA	+ -
	1	859	775	90,22%	18	2,32%	757	412	142	121	82		49,59%	-4,83%	19,32%	0,57%	15,81%	-0,17%	15,27%	4,44%
	2	814	769	94,47%	27	3,51%	742	440	111	93	98		52,12%	-7,18%	13,09%	-1,87%	13,82%	1,28%	20,97%	7,76%
	3	864	789	91,32%	20	2,53%	769	396	186	132	55		49,48%	-2,01%	19,26%	-4,93%	14,76%	-2,40%	16,49%	9,34%
	4	792	713	90,03%	15	2,10%	698	392	114	94	98		52,09%	-4,07%	14,57%	-1,76%	15,01%	1,54%	18,33%	4,29%
02.04.2000	Ges.	3329	3046	91,50%	80	2,63%	2966	1640	553	440	333		50,78%	-4,51%	16,61%	-2,04%	14,82%	-0,02%	17,79%	6,56%
	Differenz zu 1995	-861	385		-141		526	106	98	440	-118									

Ergebnisse in %



Sitzverteilung



Bürgermeisterwahl 2005

Wahl des Bürgermeisters

zur Gemeindevertretungswahl 2005

	Spr	wahlber	abgeg.	%	unglt.	%	gültig	G. Brändle	H. Hütter	St. Flatz
	1	999	685	68,57%	57	8,32%	628	454	105	69
	2	1000	674	67,40%	85	12,61%	589	416	70	103
	3	1228	713	58,06%	95	13,32%	618	434	118	66
	4	963	589	61,16%	77	13,07%	512	367	65	80
	Ges.	4190	2661	63,51%	314	11,80%	2347	1671	358	318

G. Brändle	H. Hütter	St. Flatz
72,29%	16,72%	10,99%
70,63%	11,88%	17,49%
70,23%	19,09%	10,68%
71,68%	12,70%	15,63%
71,20%	15,25%	13,55%

